

## WOVEN COTTON TAK®rags

### THE ORIGINAL TAK®rag

#### MEDIUM TACK

The original TAK®rag is a general purpose TAK®rag used in any area for the removal of dust contamination. Different sizes and packaging are available to suit the individual and bulk user needs. Also available are larger sizes for maximum area coverage. The original TAK®rag is an ideal tool in the fight against contamination.

1 x 100	D3006-1X100	a roll
4 x 50	D3009-4X50	bulk pack
10 x 50	D3009-10X50	bulk pack
100 x 1	D3019-100X1	bleached individually wrapped
10 x 50	D3020-10X50	bleached bulk pack
20 x 10	D3023-20X10	individually wrapped
50 x 1	D3023-50X1	individually wrapped with dispenser
100 x 1	D3023-100X1	individually wrapped
20 x 10	D3023-20X10C	clamshell

### maxaTAK®

#### MEDIUM TACK, TEXTURED COTTON

This is a large TAK®rag with superior dust holding capacity. It is made from textured cotton, which gives it its soft, high bulk nature. Ideal for large surface areas or high levels of dust.

25 x 1	D3033-25X1	individually wrapped
2 x 50	D3002-2X50	bulk pack

### THE ORIGINAL TAK®rag LIGHT

#### LIGHT TACK

The original general purpose TAK®rag with a lighter resin content, used in any area for the removal of dust contamination. Different sizes and packaging are available to suit the individual and bulk user needs. Also available are larger sizes for maximum area coverage. The original TAK®rag is an ideal tool in the fight against contamination.

20 x 10	D3017-20X10	individually wrapped
10 x 50	D3017-10X50	bulk pack
20 x 10	D3017-20X10C	clamshell
50 x 1	D3017-50X1	individually wrapped with dispenser



## NON WOVEN TAK®rags

### aquaTAK®

#### LIGHT-MEDIUM TACK

aquaTAK® is made from a blue non-woven fabric which gives it a high snag resistant quality. Ideal for uneven surfaces and developed for use with water-based paint systems.

10 x 50	D3042-10X50	bulk pack
20 x 10	D3042-20X10	clamshell
10 x 50	D3032-10X50	bulk pack light tak

### ultraTAK®

#### LIGHT-MEDIUM TACK

UltraTAK® is made from a ultra soft white non-woven fabric which gives it a high snag resistant quality. Ideal for uneven surfaces and developed for use with water-based paint systems.

10 x 50	D3055-10X50	bulk pack
1000 x 1	D3055-1000X1	individually wrapped
50 x 1	D3055-50X1	supplied with dispenser



## KNITTED POLYESTER TAK®rags

### autoTAK®

#### LIGHT TACK

This non linting, honeycomb fabric design TAK®rag finds particular use in the paint finishing of motor vehicles. Tests have shown that dirt and fibre counts at the end of the paint finishing line can be reduced up to two thirds with great impact on costs.

10 x 50	D3035R-10X50	bulk pack
---------	--------------	-----------

### kleenTAK®

#### MEDIUM TACK

kleenTAK® is a high quality resin impregnated textile cleaning wipe. Based on a specially selected, white high quality / high strength, extremely low linting continuous filament box knit polyester substrate. Specifically designed to remove and collect dust, dirt, fibres, hair etc from prepared surfaces prior to finishing, painting or enhancement. The product is impregnated to the optimum weight ratio with a unique resin system to provide extremely high absorbency and contaminant retention.

10 x 50	D3057-10X50	bulk pack
---------	-------------	-----------

### puraTAK®

#### MEDIUM TACK

puraTAK® is a premium quality, resin impregnated textile cleaning wipe. Based on a specially selected, white high quality / high strength, extremely low linting continuous filament box knit polyester substrate. Specifically designed to remove and collect dust, dirt, fibres, hair etc from prepared surfaces prior to finishing, painting or enhancement. The product is impregnated to the optimum weight ratio with a unique resin system to provide the ultimate in contaminant collection and retention performance.

10 x 50	D3047-10X50	bulk pack
---------	-------------	-----------



## TAK®mats

### SDA TAK®mats

#### SUPER DUST ABSORBANT

Super Dust Absorbent TAK®mats have 36 resin impregnated cotton covers enclosed in a heavy duty plastic frame with a super dust absorbent cushion foam interior. Top layer can be removed when soiled, to reveal a clean layer.

61 x 91cm	D3305-2X1	2 Mats (SDA3)
104 x 91cm	D3304-2X1	2 Mats (SDA2)
152 x 91cm	D3303-1	1 Mat (SDA1)

### LP TAK®mats

#### LOW PROFILE

Low Profile TAK®mats these mats have 30 positive adhesive plastic layers and are only 2mm thick. They can be supplied in white or blue. These layers are peeled away once soiled to reveal a fresh layer.

115 x 45cm	D3306-4X1	4 Mats (White)
115 x 45cm	D3307-4X1	4 Mats (Blue)

## BARRIER CURTAINS



### BARRIER CURTAIN

#### HIGH TACK COTTON, FLAME RETARDANT

Barrier Curtain is an excellent material for filtering air and effectively removes unwanted contamination such as lint, dust and other fibrous particles.

86cm x 50m	D3080-1X50	50m roll
86cm x 35m	D3081-35	35cm roll with release paper



DUST CONTROL

WATER TREATMENT

PROTECTIVE COATINGS

SURFACE CLEANING

METAL PRE-TREATMENT

PAINT REMOVAL

HANDCARE

## SEALANT WIPE

### HIGH STRENGTH, LOW LINT

Sealant Wipe is based on a specially selected high strength low lint non-woven fabric that meets the requirements of products used for cleaning in 'critical' areas. The product can be used dry as supplied or in conjunction with liquid cleaning agents to remove industrial sealants from application equipment, nozzles or finished components.

10 x 50      D3120-10X50      bulk pack

## SOLVENT WIPE

### HIGHLY ABSORBENT

This is a green non woven strong, highly absorbent wipe compatible with commonly used solvents used in the preparation of surfaces. It will not scratch or mark and has a long life due to its strong construction.

10 x 50      D3113-10X50      bulk pack



## LOW LINT WIPE

### LOW LINT

Low Lint Wipe is an extremely low lint cleaning wipe based on a specially selected white, high quality / high strength continuous filament honeycomb knit polyester substrate. The product will not suffer from massive "fibre shed" when abraded or snagged as can normally be associated with other cleaning wipe substrates.

10 x 50      D3112-10X50      bulk pack

## KLEENKNIT TUBE WIPES

### PREMIER LINT FREE

Absorbent tube wiper is the proven premier lint free wiping cloth for automotive paint applications. Made of 100% first quality, continuous filament polyester. The absorbent tube wiper is more durable than other substrates and prevents "shedding" when snagged or caught on an irregular surface. Due to our vertical manufacturing system and strict quality assurance requirements Kleenknit sets the benchmark for quality. Superior absorbent capabilities allow for use with all sealer and solvent types.

12" Diameter	D3150-1X1000	1000 Wipes (150 Denier)
18" Diameter	D3155-1X500	500 Wipes (150 Denier)

## KLEENKNIT ROBOT COVERS

### LINT FREE

Kleenknit Robot Covers are made of 100% first quality, continuous filament polyester. The tubular design provides a protective covering for sealer area hoses and robotic machinery. The Kleenknit Robot Cover is lint free and contains no crater causing agents.

30"	S9051-1X1	100m roll
8"	S9053-1X1	77.5m roll

## IMPREGNATED WIPES

### ANTI-STATIC DUSTER

#### ANTI-STATIC

The antistatic duster is an orange, open weave cotton/rayon cloth with overlapped stitched edges. It is impregnated with an anti-static enhancer to give excellent removal and retention of static, dust and dirt.

61 x 21cm	D3101-10X10	bulk pack
-----------	-------------	-----------

### DG WIPES

#### LOW V.O.C, DEGREASING WIPES

Low lint, low VOC aqueous degreasing wipes for all degreasing applications. Resealable packs, high quality fabric.

10 x 25	D3084-10X25	bulk pack
---------	-------------	-----------

### ADCLENS ANTI-STATIC DUSTER

#### ANTI-STATIC

This is a top quality ultra soft, yellow knitted cotton fabric with overlapped edges to eliminate fibres. It also contains an anti-static impregnant to eliminate static build up on plastic surfaces and help prevent the generation of static charges on most non-conductive surfaces. It can be used on the most delicate of items.

33 x 38cm	D3102-10X10	bulk pack
-----------	-------------	-----------

### MICROWIPE AS

#### ULTRA LOW V.O.C

Lint free non-woven microfibre fabric impregnated with a fast evaporating, anti static, ultra-low VOC level degreasing liquid. Ideal for cleaning and surface preparation of both metals and plastics prior to secondary operations. Available with standard and light impregnation levels.

10 x 25	D3086F-1X10X25	bulk pack (standard)
10 x 25	D3087-1X10X25	bulk pack (light)



DUST CONTROL

WATER TREATMENT

PROTECTIVE COATINGS

SURFACE CLEANING

METAL PRE-TREATMENT

PAINT REMOVAL

HANDCARE



# TAK®kill DENATURANTS

WATER TREATMENT



## TAK®kill DENATURANT MS

### B4711

#### MEDIUM SOLIDS

TAK®kill Denaturant MS is a colourless liquid based on a mixture of caustic and non-caustic alkalis formulated as an additive for spray booth water treatment. As the product is liquid the disadvantages associated with dissolving powder alternatives are eliminated.

TAK®kill Denaturant MS is suitable for use in many different spray booth designs. It will rapidly denature a considerable range of different paint types, dependant on booth design the paint residue will float or sink in an easily removable form with minimal adhesion of paint residues to working surfaces.

Paint Type:  
**Medium Solids.  
Stoving Alkyds.  
Acrylics**  
Initial Concentration  
as % of Volume:  
**1%**

25L B4711-25 Drum

## TAK®kill DENATURANT HS

### C4700

#### HIGH SOLIDS

In keeping with our policy of continued improvement and research, Orapi Applied have developed a paint denaturant based on organic components which result in a formulation as environmentally acceptable as it is effective. The product is also relatively safe to handle as it contains NO CAUSTIC ALKALIS.

The TAK®kill HS system consists of one liquid component plus a regulator B5820 Alkaline pH Regulator which are dosed into the water system of the spray booths. The condition of the paint solids are completely denatured, with no residual tackiness or tendency to stick to surfaces with which they come into contact.

Paint Type:  
**High Solids.  
Polyester Primer.  
Plus some water-  
borne in the  
same booth**  
Initial Concentration  
as % of Volume:  
**1%**

25L C4700-25 Drum  
205L C4700-205 Barrel

## TAK®kill DENATURANT WB

### D4714

#### WATER BORNE

TAK®kill Denaturant WB is a liquid preparation consisting of a solution of alkalis formulated for use as an additive for spray booth water treatment. As TAK®kill Denaturant WB is a liquid the disadvantages associated with dissolving powder alternatives are eliminated.

TAK®kill Denaturant WB has been developed for the treatment of over-spray paint in paint spray booths, particularly of the conventional pump type. Reaction between the over-spray paint and the TAK®kill Denaturant WB solution in the spray booth ensures that washing chambers, plates and pipe work of the spray booth require less frequent cleaning and the treated paint will float in a conventional denatured non-sticky form for easy removal.

Paint Type:  
**Water Borne.  
2 Pack Plus  
Some Solvent  
borne in the  
same booth**  
Initial Concentration  
as % of Volume:  
**1%**

25L D4714-25 Drum  
205L D4714-205 Barrel

## TAK®kill DENATURANT GP

### B4712

#### GENERAL PURPOSE

TAK®kill Denaturant GP is a liquid preparation consisting of a solution of alkalis, formulated for use as an additive for spray booth water treatment. Due to the fact that TAK®kill Denaturant GP is a liquid, the disadvantages associated with dissolving powder alternatives are eliminated.

TAK®kill Denaturant GP has been designed for the treatment of over-spray paint in paint spray booths, particularly of the conventional pump type. Reaction between the over-spray paint and the TAK®kill Denaturant GP solution in the spray booth will mean less frequent cleaning and the treated paint will float in a convenient denatured non-sticky form for easy removal.

Paint Type:  
**General Purpose**  
Initial Concentration  
as % of Volume:  
**1%**

25L B4712-25 Drum

## TAK®kill DENATURANTS



### TAK®kill DENATURANT FM

**D4704**

#### LACQUERS

Neutral spray booth additive TAK®kill Denaturant FM has been developed for the treatment of paint over-spray especially in pumpless spray booths. TAK®kill Denaturant FM is neutral in reaction and is able to denature paints that are largely unaffected by alkaline additives.

TAK®kill Denaturant FM is supplied as a viscous liquid and finds application in the wood finishing industry.

Paint Type:  
**Water and Solvent borne stains and lacquers**  
Initial Concentration as % of Volume:  
**1%**

25L D4704-25 Drum

DUST CONTROL



WATER TREATMENT

## POLYELECTROLYTES

### TAK®kill ADDITIVE P.E.L.

**D4702**

#### POLYELECTROLYTE (RED)

TAK®kill Additive P.E.L. is a high-viscosity, milky-white liquid, developed in line with our continued policy of research and improvement, to offer polymer technology which aids separation of solids from water systems such as paint spray booths. The flocculants and coagulating agent allows the solids to separate from the water and be removed in whatever means has been designed such as flotation and skimming systems or settlement tanks. This helps save time and money on disposal of waste. The TAK®kill P.E.L. is normally used in conjunction with other TAK®kill Denaturant products which remove the tackiness of the resins prior to separation and removal.

Dose rate highly dependant on paint type and water system design.

25L D4702-25 Drum

### TAK®kill ADDITIVE P.E.L./HS

**D4705**

#### HS POLYELECTROLYTE (BLUE)

TAK®kill Additive P.E.L./HS is a slightly viscous clear liquid, developed in line with our continued policy of research and improvement, to offer polymer technology which aids separation of solids from water systems such as paint spray booths. The flocculants and coagulating agent allows the solids to separate from the water and be removed in whatever means has been designed such as flotation and skimming systems. This helps save time and money on disposal of waste. The TAK®kill P.E.L./HS is normally used in conjunction with other TAK®kill Denaturant products which remove the tackiness of the resins prior to separation and removal – Particularly with TAK®kill HS Ref:C4700.

Dose rate highly dependant on paint type and water system design.

25L D4705-25 Drum  
205L D4705-205 Barrel

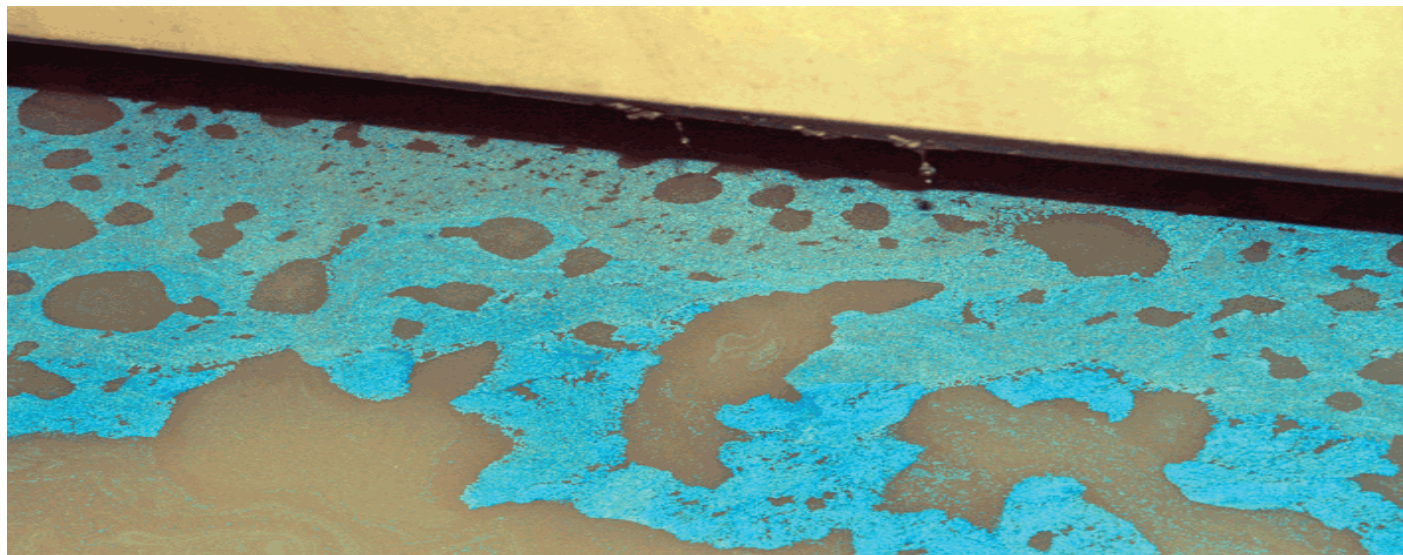
PROTECTIVE COATINGS

SURFACE CLEANING

METAL PRE-TREATMENT

PAINT REMOVAL

HANDCARE





## TAK®kill ADDITIVES

### TAK®kill AF

#### ANTI-FOAM

TAK®kill AF is a creamy emulsion blend of complex anti-foam agents in a highly refined mineral oil.

This silicone-free, highly efficient, foam-control agent is particularly suitable for use in the water of paint spray booths. It is especially effective in reducing foam created by over-spray of water-borne paints into the booth's water recirculation systems. It can also be used with solvent based paints being denatured in high pH alkaline water treatment solutions.

20KG D8805-20 Drum

### D8805

Dose in small amounts to dissipate foam as required

### TAK®kill ADDITIVE BC1

#### BACTERICIDE

TAK®kill Additive BC is a red-brown liquid particularly suitable for the elimination of offensive odours caused by bacteria in the water of water-wash paint spray booths. It must be used in conjunction with the normal spray booth compounds used to denature the paint.

5L C8705B-5 Container

### C8705B

Initial Concentration as % of Volume: 0.01% - 0.1%

### TAK®kill pH REGULATOR

#### pH REGULATOR

TAK®kill pH Regulator is an alkaline based additive designed to maintain paint booth water within pH range 8-10 where acidic water is encountered. Maintaining the water within pH range 8-10 will protect the booth structure against corrosive attack and aid separation / floatation of paint solids from the water.

25L B5820-25 Drum

### B5820

Dose in small amounts until the required pH is achieved

### TAK®kill ABC CLEANER

#### BIOCIDAL CLEANER

Biocidal cleaner used in spray booths to disinfect prior to cleandown and replenish.

4 x 5L F8707A-4X5 Container

### F8707A

Initial Concentration as % of Volume: 1%



### TAK®kill ADDITIVE MA

#### SPRAY BOOTH WATER TREATMENT

TAK®kill Additive MA is a dispersion of antifoam in a mineral oil, used in a spray booth to aid the denaturing process. It has been designed as an additive to the water of spray booths, and is to be used as an addition to the spray booth denaturant to enable more effective paint denaturing to help control foam and bacterial activity. TAK®kill Additive MA forms a film on the surface of the liquid in the water tank of the booth which prevents the particles of paint clogging and exposes the total surface area of the paint particle to attack by the paint denaturant.

25L A5629-25 Drum

### A5629

Initial Concentration as % of volume: 0.1%

WATER TREATMENT



# SOLVENT BASED PEELABLE COATINGS

## PROPEEL

### STANDARD

Propeel is a white, light-reflective, solvent-based temporary coating designed for application to all smooth, clean metal spray booth walls in order to provide an easy method of maintenance. Resistant to solvents once dry. The dried film collects paint over-spray and is readily peelable to enable even heavy over-spray deposits to be quickly and cleanly removed.

4 x 5L	G4602-4X5	Container
25L	G4602-25	Drum

## G4602

Colour:  
White

Application:  
**Spray, Brush,  
Lambswool or  
Mohair Roller**

Drying Time:  
**30-40 mins**

Coverage:  
**2-3 sq. m per litre**

Life:  
**Max 3 months**

## PROPEEL HS

### HEAT-STABILISED

Propeel HS is a white, heat-stabilised, solvent-based temporary protective coating designed for application to all smooth metal spray booth walls in order to provide an easy method of maintenance. It can withstand exposure to temperatures up to 83 deg C. Resistant to solvents once dry. The dried film collects paint over-spray and is then readily peelable to enable even heavy over-spray deposits to be quickly and easily removed.

4 x 5L	G4603-4X5	Container
25L	G4603-25	Drum

## G4603

Colour:  
White

Application:  
**Spray, Brush,  
Lambswool or  
Mohair Roller**

Drying Time:  
**30-40 mins**

Coverage:  
**2-3 sq. m per litre**

Life:  
**Max 3 months**

## PROPEEL HD

### HEAVY DUTY

Propeel HD is a heavy-duty, viscous liquid which dries to leave an off-white, tough, peelable film. It offers a simple yet effective method of maintaining and protecting non-solvent-sensitive floors and other surfaces from abrasion, paints, oils, resins, and dilute acids and alkalis. Applied correctly this peelable protector will even withstand forklift trucks.

25L	G4600-25	Drum
-----	----------	------

## G4600

Colour:  
Off-White

Application:  
**Spray, Brush,  
Lambswool or  
Mohair Roller**

Drying Time:  
**24 hrs with good  
extraction**

Coverage:  
**1 sq. m per litre**

Life:  
**Max 6 months**

## PROPEEL OP

### OPAQUE

Propeel OP is an opaque finish peelable coating designed to protect components and finished articles during handling, manufacture, assembly, storage and delivery. It can be used on all smooth ferrous metals, plain aluminium, vitreous enamels, ceramics, glass and other non-solvent-sensitive surfaces. It will protect against abrasion, impact damage, welding spatter, rusting, corrosion, chemical attack, paint resins and bitumen.

25L	G4610-25	Drum
-----	----------	------

## G4610

Colour:  
Opaque

Application:  
**Spray, Brush,  
Lambswool or  
Mohair Roller**

Drying Time:  
**24 hrs with good  
extraction**

Coverage:  
**1 sq. m per litre**

Life:  
**Outdoor max 3  
months protect  
from UV light,  
Indoors max 6  
months**



## PROPEEL CL

### SEMI-CLEAR

Propeel CL is a solvent-based, semi-clear, temporary, protective coating designed for application to glass, light fittings and other surfaces that require good visibility. Resistant to solvents once dry. This peelable provides an easy method of maintenance as the dried film collects paint over-spray and is then readily peelable enabling over-spray deposits to be quickly and cleanly removed.

25L	G4604-25	Drum
-----	----------	------

## G4604

Colour:  
Semi-Clear

Application:  
**Spray**

Drying Time:  
**30-40mins**

Coverage:  
**2-3 sq. m per litre**

Life:  
**Remove as  
required**

**Note : Test Compatibility with painted, coated and plastic surfaces before use.**

## WATER BASED PEELABLE COATINGS

### AQUAPEEL

#### STANDARD

Aquapeel is a white, water-based, temporary coating designed for application to smooth, clean metal walls in order to provide an easy method of maintenance. The dried film collects paint over-spray and contamination and is readily peelable to enable even heavy over-spray deposits to be quickly and cleanly removed.

4 x 5L	A4605-4X5	Container
25L	A4605-25	Drum

### A4605

Colour:  
**White**

Application:  
**Spray, brush or roller**

Drying Time:  
**2-3 hours with good air circ and normal temperature**

Coverage:  
**5 sq. m per litre**

Life:  
**Max 3 months**

### AQUAPEEL PLUS

#### EASILY SPRAYABLE

Aquapeel Plus is a specially formulated, white pigmented, water borne peelable protective coating based on PVA. The product is designed for application to paint spray booth walls including metal, plastic and painted surfaces. Providing a dry plastic temporary coating that will facilitate 'capture & containment' of even the heaviest paint overspray deposits that can then be quickly and easily removed by peeling off the coating for disposal during routine booth maintenance. Booths are maintained in 'as new' condition providing the ideal paint spraying environment.

*Note: If used on plastic, painted or coated surfaces compatibility testing should be carried out prior to use.*

25L	A4612-25P	Drum
-----	-----------	------

### A4612

Colour:  
**White**

Application:  
**Spray, brush or roller**

Drying Time:  
**2-3 hours with good air circ and normal temperature**

Coverage:  
**2-3 sq. m per litre**

Life:  
**Max 3 months**

### AQUAPEEL TS

#### TRANSPARENT

Aquapeel TS is a water-based, transparent, temporary protective coating designed for application to glass, light fittings and other surfaces that require good through visibility. This peelable provides an easy method of maintenance as the dried film collects paint over-spray and is then readily peelable enabling over-spray deposits to be quickly and cleanly removed.

25L	D4608-25	Drum
-----	----------	------

### D4608

Colour:  
**Transparent**

Application:  
**Brush or roller**

Drying Time:  
**3-4 Hrs**

Coverage:  
**5 sq. m per litre**

Life:  
**Remove as required**



## TACKY SURFACE COATINGS

### TACKY SURFACE COATING

#### REMOVES AIRBORNE PARTICLES

Tacky Surface Coating is a water-based solution specially formulated for application to painted spray booth walls. The film does not completely dry out at ambient temperatures and its tacky surface collects and holds dust thus greatly assisting in keeping the spray booth area free from airborne particles which can be detrimental to the finished article. Once contaminated the coating can be easily washed off with water.

4 x 5L	A4512-4X5	Container
25L	A4512-25	Drum

### A4512

Application:  
**Spray, brush or roller**

Drying Time:  
**Remains Tacky**

Coverage:  
**8-10 sq. m per litre**

Life:  
**2-4 weeks or 50 hrs at low bake temperatures**

### BARRIER GEL

#### REMOVES AIRBORNE PARTICLES

Barrier Gel is a water-based solution specially formulated for application to spray booth walls and robot covers. Due to its heavy duty nature it is not advisable to use in spraybooths where operators are spraying continuously. The film does not completely dry out and will remain effective for up to 50 hours at temperatures up to 50-70 deg C. Its tacky surface collects and holds dust thus greatly assisting in keeping the spray booth area free from airborne particles which can be detrimental to the finished article. Once contaminated the coating can be easily washed off with water.

25L	D4500-25	Drum
205L	D4500-205	Barrel

### D4500

Application:  
**Spray or brush**

Drying Time:  
**Remains soft & tacky**

Coverage:  
**2-3 sq. m per litre**

Life:  
**2-4 weeks or 50 hrs at 50-70°C**

DUST CONTROL

WATER TREATMENT

PROTECTIVE COATINGS

SURFACE CLEANING

METAL PRE-TREATMENT

PAINT REMOVAL

HANDCARE

# TACKY SURFACE COATINGS

## BARRIER PASTE WW

**A4510**

### WATER WASHABLE

Barrier Paste WW is a non-drying, water washable, dust collecting surface coating. Prevents paint penetration, adhesion and provides a dust and dirt retaining surface for spray booths and fittings. It is off-white and water-based, so can be easily removed with water.

Application:  
**Spray or brush**

Coverage:  
**4-5 sq. m per litre**

Life:  
**Remove & re-apply as required**

25L A4510-25 Drum

## BARRIER PASTE WR

**D4501**

### WATER RESISTANT

Barrier Paste WR is a non-drying, water resistant, dust collecting surface coating. Prevents paint penetration, adhesion and provides a dust and dirt retaining surface for spray booths and fittings. It is splash resistant and should be applied in thick layers. It can be re-coated and is best removed by scraping.

Application:  
**Rag or brush**

Coverage:  
**4-5 sq. m per litre**

Life:  
**3-4 weeks depending on usage**

25L D4501-25 Drum



## OVEN COAT WR HT

**D4531**

### HIGH TEMPERATURE, HIGH TACK

The applied coating converts to a highly effective tacky dust collecting surface, that will withstand high oven temperatures (up to +180 deg C) for prolonged periods.

Application:  
**Spray or brush**

Coverage:  
**4-5 sq. m per litre**

Life:  
**Remove & re-apply as required**

25L D4531-25 Drum

# BARRIER SURFACE COATINGS

## BARRIER FILM WS

**A7866**

### WATER SOLUBLE

Barrier Film WS is a water soluble coating that dries to form a white, dry, non-dusty, absorbent surface. It prevents paint over-spray from adhering to spray booths, floor plates and fittings. It is water-based and should be applied in thick layers. Barrier Film WS is easily removed by pressure wash with water or by scraping.

Colour:  
**White**

Application:  
**Spray, brush or roller**

Drying Time:  
**1-2 hrs under normal conditions**

Coverage:  
**4-5 sq. m per litre**

Life:  
**Remove and re-apply as required**

25L A7866-30 Drum  
205L A7866-205 Barrel

## BARRIER FILM AS

**A4505**

### ALKALINE SOLUBLE

Barrier Film AS is a tough, alkaline soluble, transparent coating which when dry is resistant to water but can be removed with a dilute alkaline detergent solution. These special properties make Barrier Film AS ideal for use in spray booths as a temporary protective coating. Unsightly paint over-spray adheres to the surface of Barrier Film AS instead of the underlying structure. Barrier Film AS can be used on a wide range of non-porous surfaces including floors and walls.

Application:  
**Spray or roller**

Drying Time:  
**6-8 hrs under normal conditions**

Coverage:  
**5-10 sq. m per litre**

Life:  
**Remove and re-apply as required**

10L A4505-10 Drum



# DEGREASING WIPES

## METSOLV WIPES 4022

### E4022

#### SOLVENT WIPE

Low lint solvent impregnated wipes ideal for a wide range of degreasing applications. Low vapour toxicity, low lint, fast drying with a controlled solvent content per wipe.

Application:  
Use as supplied



300 E4022-300 Perforated Roll

## METSOLV WIPES 4034

### E4034

#### SOLVENT WIPE

Metsolv 4034 Wipes are a high quality low lint paper wipe impregnated with a blend of residue free solvents. The product is ideal for a wide range of degreasing applications. Low vapour toxicity, low lint, fast drying. Dispensed as an individual wipe.

Application:  
Use as supplied

## ORANGE SOLVENT WIPES WSO150

#### DEGREASING WIPES

PRONATUR® Orange Solvent Wipes are a low lint wipe impregnated with a specially formulated blend of degreasing solvents and citrus based cleaning agents designed for use in industrial applications. It offers superior penetration and cleaning of difficult to remove contaminants, mineral oils, greases, tar/bitumen, semi-cured adhesives and sealants, uncured paints/varnishes and oil based printing inks.



PRONATUR®  
Application:  
Use as supplied

300 E4034-300 Bulk Pack

5 x 25 WSO150 Bulk pack



DUST CONTROL

WATER TREATMENT

PROTECTIVE COATINGS

 SURFACE CLEANING

METAL PRE-TREATMENT

PAINT REMOVAL

HANDCARE

## STANDARD DEGREASERS

### PRE-PAINT WIPE

#### SOLVENT CLEANING FLUID

Fast evaporating residue free solvent cleaner. The product evaporates quickly making it ideal for cleaning surfaces prior to painting.

4 x 5L	G4035G-4X5	Container
25L	G4035-25	Drum
205L	G4035-205	Barrel

### G4035

Application:  
Apply sparingly to a clean lint free cloth and wipe the surface to be cleaned/painted.

Concentration:  
Use as supplied

### ORANGE SOLVENT

#### BIODEGRADABLE SOLVENT

PRONATUR® Orange Solvent is a specially formulated blend of degreasing solvents and citrus based cleaning agents designed for use in industrial applications. The product offers controlled evaporation for increased contact time, superior penetration and cleaning of difficult to remove contaminants, mineral oils, greases, tar/bitumen, semi-cured adhesives and sealants, uncured paints/varnishes and oil based printing inks.

6 x 1L	SLO120	Bottle
6 x 1L	SLO120T	Trigger
4 x 5L	SLO128	Container
12 x 500ml	SLO130	Aerosol
25L	SLO132	Drum
205	SLO136	Barrel
1000L	SLO140	IBC

### SLO



PRONATUR®

Application:  
Spray systems, dip & ultrasonic tanks, recirculating parts washers, Manual – brush, cloth, sponge

Concentration:  
Use as supplied

### METSOAK EM3965

#### HIGH POWER EMULSIFIABLE SOLVENT DEGREASER

Metsoak EM3965 is a carefully selected blend of biodegradable surfactants formulated with hydrocarbons. The solvents rapidly penetrate oil and grease deposits and the incorporated detergency package enables the product to be readily rinsed with water. Due to its high solvency power, it is ideal for many difficult cleaning tasks including the removal of heavy fuel oils, oxidised and aged oil deposits, tars, heavy greases and tenacious lubricating or polishing compounds.

25L	H3965-25	Drum
205L	H3965-205	Barrel

### H3965

Application:  
brush, swab, non-misting spray, soak tank or recirculating parts washer.

Concentration:  
Use as supplied and to be removed by clean free-flowing water

### METSOLV 4010

#### HIGH PURITY SOLVENT CLEANER

Metsolv 4010 is an odourless, low flammability, high purity solvent blend designed for use as an air drying solvent cleaner and degreaser. The product has been formulated for the removal of a wide range of oils, greases, waxes and similar materials from metals and solvent resistant surfaces. The product is slow evaporating allowing it to remain on the surface and thoroughly penetrate the contaminant requiring removal.

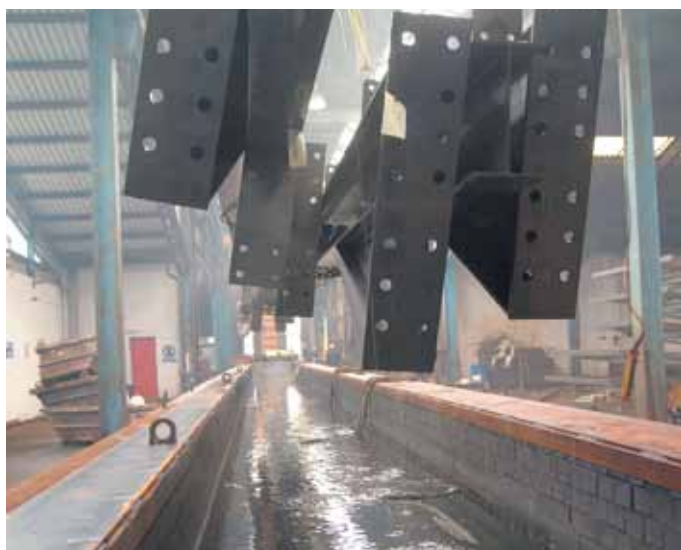
4 x 5L	E4010-4X5	Container
25L	E4010-25	Drum
205L	E4010-205	Barrel

### E4010

Application:  
spray or immersion

Concentration:  
Use as supplied

## IMMERSION DEGREASERS



### METSOAK AK3914

#### MILDLY ALKALINE NON-SILICATED CLEANER

Metsoak AK3914 is a liquid, non-silicated cleaner which may be used for the removal of a wide variety of oils and greases from ferrous and non-ferrous metal by immersion processes.

25L	A3914-25	Drum
200L	A3914-200	Barrel
1000L	A3914-1000	IBC

### A3914

Application:  
Immersion

Concentration:  
5-10%

Temperature:  
between 50 - 55°C

## HAND CLEANERS

### KLEENALL® PROTECT

#### MOISTURISER & BARRIER CREAM

We are proud to offer a premium quality conditioning cream that moisturises the skin to prevent against cracking. KLEENALL® Protect is also a barrier cream, applied frequently it protects against dirt and enables easier cleaning which means that less aggressive hand cleaners are needed. Then, after work, KLEENALL® Protect is perfect to make your hands feel your own again. Can be used for wet or dry work. 2 in 1 product, reduces the number of products required.

12 x 500ml	D7068-12X500	Pot
2 x 5L	D7068-2X5	Tub

### KLEENALL® PASTE

#### CLEANER WITH POLY-BEADS

The original KLEENALL® Paste is lightly perfumed and free rinsing, KLEENALL® Paste is a pleasant and easy to use paste that has become the market leading product for the removal of paint, resins and adhesives. The specialist formulation containing poly-beads aids the removal of stubborn grease and grime, continuing to make KLEENALL® Paste the favourite hand cleaner amongst paint sprayers, print workers, mechanics and engineers.

12 x 1L	D7030-12X1	Pot
4 x 5L	D7030-4X5	Tub
25L	D7030-25	Bucket

### KLEENALL® LIQUID

#### CLEANER WITH POLY-BEADS

A powerful liquid version of our renowned KLEENALL® Paste, KLEENALL® Liquid is an easily dispensed poly-beaded hand cleaner that provides impeccable performance for professionals in the painting, printing and engineering areas.

4 x 3L	D7067-4X3	Tub
4 x 5L	D7067G-4X5	Tub inc dispenser

### KLEENALL® BEADED

#### CLEANER WITH POLY-BEADS

A premium quality industrial gel hand cleaner designed to give superb removal of all general grease, grime and ink. Poly-beads aid the removal of stubborn dirt such as tar or even wet paint, making KLEENALL® Beaded a superb all round workshop or factory hand cleaner suitable for most applications.

6 x 3L	D7017-6X3	Tub
10L	D7017-10	Pail

### KLEENALL® TAKLEEN

#### HAND CLEANER, NON-BEADED

A general purpose hand cleaner for the removal of paints, resins, adhesives, inks, grease and grime without resulting to the use of harmful solvents. This means that KLEENALL® Takleen does not de-fat the skin, but leaves hands feeling smooth and soft. Designed to reduce cases of dermatitis, KLEENALL® Takleen uses a blend of gentle surfactants to dissolve the most difficult soiling, allowing them to be washed away.

4 x 5L	D7029-4X5	Tub
25L	D7029-25	Drum

### KLEENALL® NATURALLE

#### SOLVENT FREE CLEANER

Designed to give high performance in demanding conditions but still be ultra kind to skin. KLEENALL® Naturalle is a totally solvent free paste, combining soaps, natural detergents and poly-beads. A pleasant citrus fragrance and a rich lather make this a powerful but luxurious product capable of removing ingrained dirt and leaving hands smooth and conditioned.

6 x 3L	D7018-6X3	Tub
--------	-----------	-----

## HANDSOAPS

### KLEENALL® LUXURY

#### CLEANER & CONDITIONER

A mild but powerful, synthetic based liquid hand lotion with a luxurious fragrance that cleans and conditions to leave the skin feeling soft and supple. Formulated for use in the most opulent of surroundings such as hotels and restaurants, KLEENALL® Luxury will also be the product of choice for office, factory and wash rooms.

2 x 5L	D7011-2X5	Tub
12 x 800ml	D7011-12X800	Pot





## HANDSOAPS

### KLEENALL® ANTI-BAC

#### ANTI-BACTERIAL HANDSOAP

A powerful, non-perfumed, anti-bacterial hand soap that cleans and contributes to good hygiene. KLEENALL® Anti-Bac is effective against Enterobacteriaceae, Staphylococcus sp. and many other organisms. Widely used in Food Manufacturing and Catering outlets, also suitable for use in the healthcare sector. Added emollients in KLEENALL® Anti-Bac prevent the skin from drying or cracking even with frequent use. This combined with the anti-bacterial properties, mean that a residual bactericidal action is observed.

2 x 5L      D7045-2X5      Tub



### KLEENALL® WIPES

#### WATERLESS SYSTEM

KLEENALL® heavy duty hand wipes are a waterless hand cleaning system. Combining a high quality hand cleaner with a non-scratch abrasive towel to create a performance wipe which removes heavy grease, lubricants, adhesives, oils, tar, inks and many other difficult to remove soiling without the need for water. Ideal for the mobile workshop or situations where washing facilities do not exist.

10 x 70 Wipes      D7036-10X70      Tub

### DERMAGEL

#### ALCOHOL HAND SANITISER GEL

Dermagel is an alcoholic gel for disinfection of the hands following washing with a hand soap. Used where high standards of hand hygiene are required.

2 x 5L      E7047-2X5      Container

## DISPENSERS

### WALL MOUNTED BRACKET

#### DISPENSER

Where usage of hand cleaner is high and appearance is important, Orapi Applied provide a robust, reliable and unique solution. Our 3 litre tubs fit into a handy wall mounted bracket with a heavy duty integral pump system that gives easy and reliable operation, looks good and prevents waste.

1 Unit      S9344-1X1      Dispenser Pump with Bracket

### DISPENSER PUMP

#### DISPENSER

Our 3 litre polythene pails have the facility to accept a top mounted pump dispenser to prevent cross contamination between users and ensure the working environment remains clean and professional.

1 Unit      S9347-1X1      Dispenser Pump

### WALL MOUNTED MODULAR SYSTEM

#### DISPENSER

Our new wall mounted modular system features "Double Hinge Technology" and interchangeable pump modules for liquid, spray or foaming products that can be refillable. Dispensers can be differentiated by colour coding for soap, sanitise, and protection but with a consistent "look" that maintains a professional image.

1 Unit      S9330-1X1      1 Litre Dispenser



DUST CONTROL

WATER TREATMENT

PROTECTIVE COATINGS

SURFACE CLEANERS

METAL PRE-TREATMENT

PAINT REMOVAL



HANDCARE

## LOCATIONS

## FRANCE

**ORAPI FRANCE**

Parc Industriel de la Plaine de l'Ain  
225, allée des Cèdres, 01150 Saint-Vulbas  
Tel: +33 4 74 40 20 20 Fax: +33 4 74 40 20 21  
Web: www.orapi.com Email: contact@orapi.com

**FRANCE - ARGOS HYGIENE**

12 rue Pierre Mendès France - 69120 Vaulx-en-Velin  
Tel. : +33 (0)4 37 06 28 00 Fax : +33 (0)4 37 06 28 50  
Web : www.argos-hygiene.fr E-mail : contact@argos-hygiene.fr

**FRANCE - DACD**

Parc d'Activités Mathias, BP 9  
26320 Saint Marcel lès Valence  
Tel: +33 4 75 58 80 10 Fax: +33 4 75 58 74 46  
Web: www.dacd.com Email: contact@dacd.com

**FRANCE - PHEM TECHNOLOGIE**

21 allée Louis Bréguet, 93421 Villepinte Cedex  
Tel: +33 1 49 63 44 55 Fax: +33 1 49 63 05 56  
Web: www.phem.fr Email: contact@phem.fr

**FRANCE - PROVEN ORAPI**

21 allée Louis Bréguet, 93421 Villepinte Cedex  
Tel: +33 1 49 63 44 55 Fax: +33 1 49 63 05 56  
Web: www.proven.fr Email: accueil@proven.fr

**FRANCE - TOP PRO HYGIENE**

Parc Industriel de la Plaine de l'Ain,  
225 Allée des Cèdres - 01150 Saint-Vulbas  
Tel. : +33 (0)4 74 40 54 00 Fax : +33 (0)4 74 40 54 01  
Web : www.top-hygiene.fr

## SOUTHERN EUROPE

**ITALY – ORAPI ITALIA SRL**

Via Vaccareccia 39, 00040 Pomezia (RM)  
Tel: +39 06 916 10576 Fax: +39 06 918 02468  
Email: info@orapi.it

**SPAIN – ORAPI TRANSNET SL**

C/Secorún nº 4 - 22600 Sabiñánigo (Huesca)  
Tel. / Fax : +34 974 480 828  
E-mail : adminote@orapi.com

## ASIA &amp; MIDDLE EAST

**SINGAPORE – ORAPI APPLIED (S) PTE LTD**

No. 26 Tuas Avenue 13 - Singapore 638992  
Tel. : +65 6265 2888 Fax : +65 6268 6474  
E-mail : sin.sales@orapi.com.sg

**THAILAND – ORAPI APPLIED (T) CO. LTD**

55/75 Moo 9, Townplus Kaset-Nawamin Village, Klonglumjiak Road,  
Klongkum, Buengkum Bangkok 10240 – THAILAND  
Tel. : +66 2508 1342 Fax : +66 25081343  
Email: info@ccsthailand.com

**MALAYSIA – ORAPI APPLIED (M) SDN BHD**

No. 10, Jalan PJU 3/49 - PJU 3, Sunway Damansara  
47810 Petaling Jaya - Selangor, Malaysia  
Tel. : +603 7805 3805 Fax : +603 7880 5805  
E-mail : msia.sales@orapi.com.my

**DUBAI - ORAPI MIDDLE EAST L.L.C.**

729 Business Village Main Bldg B - PO Box 120509 Dubai UAE  
Tel : +971 (0) 42942947 Fax : +971 (0) 42942948  
Email : dxb.sales@orapi.ae

## NORTHERN EUROPE

**UNITED KINGDOM – ORAPI APPLIED LTD**

Spring Road, Smethwick, West Midlands B66 1PT  
Tel: +44 121 525 4000 Fax: +44 121 525 4919  
Web: www.orapiapplied.com Email: info@orapiapplied.com

**NETHERLANDS – ORAPI APPLIED NEDERLAND B.V.**

Ondernemingsweg 16, 2404 HN Alphen aan den Rijn  
Tel: +31 172 43 72 21 Fax: +31 172 43 69 01  
Web: www.orapiapplied.nl Email: benelux@orapiapplied.com

**BELGIUM – ORAPI APPLIED BELGIUM S.A.**

Kapelsesteenweg 292 - 2930 Brasschaat  
Tel. : +32 2 2800 736 E-mail : sales@orapiapplied.be

**NORWAY – ORAPI NORDIC NORWAY NUF**

Vaksala – Eke Hus C - 755 94 UPPSALA  
Tel. : +47 333 66 000  
E-mail : info@orapi.se

**FINLAND – ORAPI NORDIC OY AB**

Salpakuja 6, 01200 Vantaa  
Tel: +358 9 894 6430 Fax: +358 9 8946 4322  
Web: www.orapinordic.net Email: sales@orapinordic.net

**SWEDEN – ORAPI NORDIC OY AB**

Vaksala – Eke Hus C - 755 94 UPPSALA  
Tel. : +46 18 506 010 Fax : +46 18 500 910  
Web : www.orapi.se E-mail : info@orapi.se

**POLAND – ORAPI TRANSNET SP. z o.o.**

ul. Sremska 75a - 62-050 Mosina - Polska  
Tel. : +48 61 813 86 40 Fax : +48 61 813 86 91  
E-mail : mariusz.polkowski@orapi.com

## PACIFIC

**AUSTRALIA – ORAPI PACIFIC-VICTORIA LUB PTY LTD**

Factory 24, 29-39 Kirkhan Road West, Keysborough, PO Box 816, Victoria 3173  
Tel: +613 9701 5373 Fax: +613 9701 5532  
Email: info@viclub.com.au

**MAURITIUS – ORAPI PACIFIC PROLUB CIE LTD**

62 Pailles Road, Port Louis  
Tel: +230 208 1477 Fax: +203 210 7370  
Email: admin.prolub@intnet.mu

**NEW CALEDONIA – ORAPI PACIFIC SFAC SARL**

27 rue Ampère, ZI Ducos, BP 3725, 98846 Nouméa Cedex  
Tel: +687 25 15 40 Fax: +687 27 20 67 Email: sfac@sfac.nc

**SOUTH AFRICA – ORAPI PACIFIC – ORAPI AFRICA LTD**

228 Albert Amon Road, Millenium Business Park Meadowdale Ext. 7,  
1609 Gauteng  
Tel: +27 11 453 17 13 Fax: +27 11 453 32 79  
Email: info@orapiafrica.co.za

**TAHITI / FRENCH POLYNESIA – ORAPI PACIFIC TECHNIPAC SARL**

Z.I Vallée de la Tipaerui, BP 1706, 98713 Papeete  
Tel: +689 74 57 33 Fax: +689 45 04 04  
Email: schatt.technipac@mail.pf

## AMERICA

**CANADA – ORAPI CANADA LTD**

7521 Henri Bourassa Est,  
Montreal Quebec H1E 1N9  
Tel: +1 514 735 32 72 Fax: +1 514 735 8550  
Email: jeanf@orapi-canada.com